

# 7.7 T2000-800 RF PCB

## T2000-800 Parts List (IPN 220-01305-03)

### Parts List Amendments

R258: Changed from 10Ω to 0Ω (IPN 036-10000-00) to improve power output (6/05/97)

Mechanical parts corrections: Delete IPN 362-00010-08 (insulating gasket)

Add IPN 240-02100-11 (BNC socket)

Add IPN 353-00020-12 (0.9mm flat washer)

| Ref   | Var | IPN          | Description                            | Ref  | Var | IPN          | Description                            |
|-------|-----|--------------|--|------|-----|--------------|--|
| C1    |     | 015-22330-01 | CAP CER 0805 CHIP 33P 5% NPO 50V       | C213 |     | 020-58470-05 | CAP ELECT AI RDL 47M 16V 6.3X7MM       |
| C2    |     | 015-22330-01 | CAP CER 0805 CHIP 33P 5% NPO 50V       | C214 |     | 015-22330-01 | CAP CER 0805 CHIP 33P 5% NPO 50V       |
| C3    |     | 015-22330-01 | CAP CER 0805 CHIP 33P 5% NPO 50V       | C215 |     | 020-57470-10 | CAP ELECT AI RDL 4U7 50V LO ESR        |
| C100  |     | 015-25100-08 | CAP CER 0805 CHIP 10N 10% X7R 50V      | C216 |     | 015-25100-08 | CAP CER 0805 CHIP 10N 10% X7R 50V      |
| C104  |     | 015-06100-08 | CAP CER 1206 CHIP 100N 10% X7R 50V     | C217 |     | 020-58470-05 | CAP ELECT AI RDL 47M 16V 6.3X7MM       |
| C106  |     | 015-22330-01 | CAP CER 0805 CHIP 33P 5% NPO 50V       | C218 |     | 020-57470-10 | CAP ELECT AI RDL 4U7 50V LO ESR        |
| C107  |     | 015-22330-01 | CAP CER 0805 CHIP 33P 5% NPO 50V       | C219 |     | 020-57470-10 | CAP ELECT AI RDL 4U7 50V LO ESR        |
| C108  |     | 015-22330-01 | CAP CER 0805 CHIP 33P 5% NPO 50V       | C220 |     | 022-55100-10 | CAP MYLAR AI 10N 5% 63V POTTED         |
| C109  |     | 015-22330-01 | CAP CER 0805 CHIP 33P 5% NPO 50V       | C221 |     | 022-57100-02 | CAP MYLAR AI 1M 20% 50V POTTED         |
| C110  |     | 015-22330-01 | CAP CER 0805 CHIP 33P 5% NPO 50V       | C222 |     | 022-06100-15 | CAP MET POLYSTR 100N 5% 50V 5.6MM HI   |
| C124  |     | 015-21330-01 | CAP CER 0805 CHIP 3P3 +/-0.25P NPO 50V | C223 |     | 015-22330-01 | CAP CER 0805 CHIP 33P 5% NPO 50V       |
| C125  |     | 015-21180-01 | CAP CER 0805 CHIP 1P8 +/-0.25 NPO 50V  | C224 |     | 015-22330-01 | CAP CER 0805 CHIP 33P 5% NPO 50V       |
| C126  |     | 015-21330-01 | CAP CER 0805 CHIP 3P3 +/-0.25P NPO 50V | C225 |     | 015-22330-01 | CAP CER 0805 CHIP 33P 5% NPO 50V       |
| C127  |     | 015-21680-01 | CAP CER 0805 CHIP 6P8 +/-0.25P NPO 50V | C226 |     | 015-06100-08 | CAP CER 1206 CHIP 100N 10% X7R 50V     |
| C128  |     | 015-22220-01 | CAP CER 0805 CHIP 22P 5% NPO 50V       | C227 |     | 015-21560-01 | CAP CER 0805 CHIP 5P6 +/-0.25P NPO 50V |
| C129  |     | 015-25100-08 | CAP CER 0805 CHIP 10N 10% X7R 50V      | C229 |     | 020-58470-05 | CAP ELECT AI RDL 47M 16V 6.3X7MM       |
| C130  |     | 015-25100-08 | CAP CER 0805 CHIP 10N 10% X7R 50V      | C230 |     | 015-22220-01 | CAP CER 0805 CHIP 22P 5% NPO 50V       |
| C133  |     | 015-22390-01 | CAP CER 0805 CHIP 39P 5% NPO 50V       | C231 |     | 015-25100-08 | CAP CER 0805 CHIP 10N 10% X7R 50V      |
| C134  |     | 015-21560-01 | CAP CER 0805 CHIP 5P6 +/-0.25P NPO 50V | C232 |     | 015-21120-01 | CAP CER 0805 CHIP 1P2 +/-0.25 NPO 50V  |
| C135  |     | 015-22150-01 | CAP CER 0805 CHIP 15P 5% NPO 50V       | C233 |     | 020-57470-10 | CAP ELECT AI RDL 4U7 50V LO ESR        |
| C136  |     | 015-21680-01 | CAP CER 0805 CHIP 6P8 +/-0.25P NPO 50V | C235 |     | 015-06100-08 | CAP CER 1206 CHIP 100N 10% X7R 50V     |
| C137  |     | 015-23120-01 | CAP CER 0805 CHIP 120P 5% NPO 50V      | C236 |     | 015-21330-01 | CAP CER 0805 CHIP 3P3 +/-0.25P NPO 50V |
| C138  |     | 015-21680-01 | CAP CER 0805 CHIP 6P8 +/-0.25P NPO 50V | C237 |     | 015-21330-01 | CAP CER 0805 CHIP 3P3 +/-0.25P NPO 50V |
| C139  |     | 015-22150-01 | CAP CER 0805 CHIP 15P 5% NPO 50V       | C238 |     | 015-21390-01 | CAP CER 0805 CHIP 3P9 +/-0.25P NPO 50V |
| C140  |     | 015-21560-01 | CAP CER 0805 CHIP 5P6 +/-0.25P NPO 50V | C240 |     | 015-24100-08 | CAP CER 0805 CHIP 1N 10% X7R 50V       |
| C141  |     | 015-22390-01 | CAP CER 0805 CHIP 39P 5% NPO 50V       | C241 |     | 015-24100-08 | CAP CER 0805 CHIP 1N 10% X7R 50V       |
| C142  |     | 015-21560-01 | CAP CER 0805 CHIP 5P6 +/-0.25P NPO 50V | C242 |     | 015-25100-08 | CAP CER 0805 CHIP 10N 10% X7R 50V      |
| C149  |     | 015-22330-01 | CAP CER 0805 CHIP 33P 5% NPO 50V       | C243 |     | 015-22330-01 | CAP CER 0805 CHIP 33P 5% NPO 50V       |
| C158  |     | 015-24100-08 | CAP CER 0805 CHIP 1N 10% X7R 50V       | C244 |     | 015-22560-01 | CAP CER 0805 CHIP 56P 5% NPO 50V       |
| C174  |     | 020-58470-05 | CAP ELECT AI RDL 47M 16V 6.3X7MM       | C245 |     | 015-25100-08 | CAP CER 0805 CHIP 10N 10% X7R 50V      |
| C175  |     | 015-06100-08 | CAP CER 1206 CHIP 100N 10% X7R 50V     | C246 |     | 015-24100-08 | CAP CER 0805 CHIP 1N 10% X7R 50V       |
| C176  |     | 015-06100-08 | CAP CER 1206 CHIP 100N 10% X7R 50V     | C247 |     | 015-21270-01 | CAP CER 0805 CHIP 2P7 +/-0.25P NPO 50V |
| C179  |     | 015-25100-08 | CAP CER 0805 CHIP 10N 10% X7R 50V      | C248 |     | 020-09100-07 | CAP ELECT 100M 10V 6.3X7MM 5MM         |
| C180  |     | 015-06100-08 | CAP CER 1206 CHIP 100N 10% X7R 50V     | C249 |     | 015-24100-08 | CAP CER 0805 CHIP 1N 10% X7R 50V       |
| C181  |     | 015-06100-08 | CAP CER 1206 CHIP 100N 10% X7R 50V     | C250 |     | 015-22220-01 | CAP CER 0805 CHIP 22P 5% NPO 50V       |
| C182  |     | 015-22330-01 | CAP CER 0805 CHIP 33P 5% NPO 50V       | C251 |     | 015-23120-01 | CAP CER 0805 CHIP 120P 5% NPO 50V      |
| C184  |     | 015-22330-01 | CAP CER 0805 CHIP 33P 5% NPO 50V       | C252 |     | 015-22180-01 | CAP CER 0805 CHIP 18P 5% NPO 50V       |
| C185  |     | 015-25100-08 | CAP CER 0805 CHIP 10N 10% X7R 50V      | C253 |     | 015-22120-01 | CAP CER 0805 CHIP 12P 5% NPO 50V       |
| C186  |     | 015-25100-08 | CAP CER 0805 CHIP 10N 10% X7R 50V      | C254 |     | 015-24100-08 | CAP CER 0805 CHIP 1N 10% X7R 50V       |
| C187  |     | 015-24100-08 | CAP CER 0805 CHIP 1N 10% X7R 50V       | C255 |     | 015-21270-01 | CAP CER 0805 CHIP 2P7 +/-0.25P NPO 50V |
| C188  |     | 015-22330-01 | CAP CER 0805 CHIP 33P 5% NPO 50V       | C256 |     | 015-24100-08 | CAP CER 0805 CHIP 1N 10% X7R 50V       |
| C189  |     | 015-23470-08 | CAP CER 0805 CHIP 470P 10% X7R 50V     | C301 |     | 015-24100-08 | CAP CER 0805 CHIP 1N 10% X7R 50V       |
| C190  |     | 015-23470-08 | CAP CER 0805 CHIP 470P 10% X7R 50V     | C303 |     | 015-22330-01 | CAP CER 0805 CHIP 33P 5% NPO 50V       |
| C191  |     | 015-23560-08 | CAP CER 0805 CHIP 560P 10% X7R 50V     | C304 |     | 015-24100-08 | CAP CER 0805 CHIP 1N 10% X7R 50V       |
| C192  |     | 015-22330-01 | CAP CER 0805 CHIP 33P 5% NPO 50V       | C305 |     | 015-22330-01 | CAP CER 0805 CHIP 33P 5% NPO 50V       |
| C193  |     | 020-57470-10 | CAP ELECT AI RDL 4U7 50V LO ESR        | C306 |     | 015-21390-01 | CAP CER 0805 CHIP 3P9 +/-0.25P NPO 50V |
| C194  |     | 015-22330-01 | CAP CER 0805 CHIP 33P 5% NPO 50V       | C307 |     | 015-06100-08 | CAP CER 1206 CHIP 100N 10% X7R 50V     |
| C195  |     | 015-22330-01 | CAP CER 0805 CHIP 33P 5% NPO 50V       | C308 |     | 015-24100-08 | CAP CER 0805 CHIP 1N 10% X7R 50V       |
| C197  |     | 015-06100-08 | CAP CER 1206 CHIP 100N 10% X7R 50V     | C309 |     | 015-22330-01 | CAP CER 0805 CHIP 33P 5% NPO 50V       |
| C198  |     | 015-21100-01 | CAP CER 0805 CHIP 1P0 +/-0.25P NPO 50V | C310 |     | 015-06100-08 | CAP CER 1206 CHIP 100N 10% X7R 50V     |
| C199  |     | 015-24100-08 | CAP CER 0805 CHIP 1N 10% X7R 50V       | C311 |     | 015-22330-01 | CAP CER 0805 CHIP 33P 5% NPO 50V       |
| C200  |     | 015-25100-08 | CAP CER 0805 CHIP 10N 10% X7R 50V      | C312 |     | 015-24100-08 | CAP CER 0805 CHIP 1N 10% X7R 50V       |
| C201  |     | 015-06100-08 | CAP CER 1206 CHIP 100N 10% X7R 50V     | C313 |     | 015-21470-01 | CAP CER 0805 CHIP 4P7 +/-0.25P NPO 50V |
| C202  |     | 015-22220-01 | CAP CER 0805 CHIP 22P 5% NPO 50V       | C314 |     | 015-21470-01 | CAP CER 0805 CHIP 4P7 +/-0.25P NPO 50V |
| C203  |     | 015-25220-08 | CAP CER 0805 CHIP 22N 10% X7R 50V      | C315 |     | 015-22330-01 | CAP CER 0805 CHIP 33P 5% NPO 50V       |
| C204  |     | 015-06100-08 | CAP CER 1206 CHIP 100N 10% X7R 50V     | C316 |     | 015-24100-08 | CAP CER 0805 CHIP 1N 10% X7R 50V       |
| C205  |     | 015-25220-08 | CAP CER 0805 CHIP 22N 10% X7R 50V      | C317 |     | 015-22330-01 | CAP CER 0805 CHIP 33P 5% NPO 50V       |
| C206  |     | 015-06100-08 | CAP CER 1206 CHIP 100N 10% X7R 50V     | C318 |     | 015-22330-01 | CAP CER 0805 CHIP 33P 5% NPO 50V       |
| C207  |     | 015-25100-08 | CAP CER 0805 CHIP 10N 10% X7R 50V      | C319 |     | 015-21330-01 | CAP CER 0805 CHIP 3P3 +/-0.25P NPO 50V |
| C208  |     | 015-23100-01 | CAP CER 0805 CHIP 100P 5% NPO 50V      | C320 |     | 015-22330-01 | CAP CER 0805 CHIP 33P 5% NPO 50V       |
| C209  |     | 015-06100-08 | CAP CER 1206 CHIP 100N 10% X7R 50V     | C321 |     | 015-22330-01 | CAP CER 0805 CHIP 33P 5% NPO 50V       |
| C210  |     | 015-23100-01 | CAP CER 0805 CHIP 100P 5% NPO 50V      | C322 |     | 015-06100-08 | CAP CER 1206 CHIP 100N 10% X7R 50V     |
| C211  |     | 015-22560-01 | CAP CER 0805 CHIP 56P 5% NPO 50V       | C324 |     | 015-25100-08 | CAP CER 0805 CHIP 10N 10% X7R 50V      |
| CV212 |     | 028-02200-01 | CAP TRIM 4/20P N750 TOP ADJ RED MUR TZ | C325 |     | 015-22330-01 | CAP CER 0805 CHIP 33P 5% NPO 50V       |



| Ref   | Var | IPN          | Description                              | Ref   | Var | IPN          | Description                             |
|-------|-----|--------------|--|-------|-----|--------------|---|
| Q402  |     | 000-10008-17 | (S) XSTR SMD BC817-25 NPN SOT-23 AF LO P | R267  |     | 036-14330-00 | RES M/F 0805 CHIP 3K3 5%                |
| R101  |     | 036-14390-00 | RES M/F 0805 CHIP 3K9 5%                 | R268  |     | 036-12560-00 | RES M/F 0805 CHIP 56E 5%                |
| R102  |     | 036-13560-00 | RES M/F 0805 CHIP 560E 5%                | R271  |     | 036-13150-00 | RES M/F 0805 CHIP 150E 5%               |
| R103  |     | 036-14220-00 | RES M/F 0805 CHIP 2K2 5%                 | R272  |     | 036-13150-00 | RES M/F 0805 CHIP 150E 5%               |
| R104  |     | 036-13100-00 | RES M/F 0805 CHIP 100E 5%                | R273  |     | 036-12100-00 | RES M/F 0805 CHIP 10E 5%                |
| R105  |     | 036-12180-00 | RES M/F 0805 CHIP 18E 5%                 | R274  |     | 036-13470-00 | RES M/F 0805 CHIP 470E 5%               |
| R106  |     | 036-16100-00 | RES M/F 0805 CHIP 100K 5%                | R275  |     | 036-12100-00 | RES M/F 0805 CHIP 10E 5%                |
| R107  |     | 036-10000-00 | RES M/F 0805 CHIP ZERO OHM               | R276  |     | 036-14220-00 | RES M/F 0805 CHIP 2K2 5%                |
| R108  |     | 036-16100-00 | RES M/F 0805 CHIP 100K 5%                | R277  |     | 036-12560-00 | RES M/F 0805 CHIP 56E 5%                |
| R112  |     | 036-12470-00 | RES M/F 0805 CHIP 47E 5%                 | R278  |     | 036-16100-00 | RES M/F 0805 CHIP 100K 5%               |
| R113  |     | 036-11470-00 | RES M/F 0805 CHIP 4E7 10%                | R279  |     | 036-13180-00 | RES M/F 0805 CHIP 180E 5%               |
| R114  |     | 036-13820-00 | RES M/F 0805 CHIP 820E 5%                | R280  |     | 036-12270-00 | RES M/F 0805 CHIP 27E 5%                |
| R115  |     | 036-15120-00 | RES M/F 0805 CHIP 12K 5%                 | R281  |     | 036-13180-00 | RES M/F 0805 CHIP 180E 5%               |
| R116  |     | 036-11470-00 | RES M/F 0805 CHIP 4E7 10%                | R301  |     | 036-13220-00 | RES M/F 0805 CHIP 220E 5%               |
| R117  |     | 036-12100-00 | RES M/F 0805 CHIP 10E 5%                 | R302  |     | 036-14120-00 | RES M/F 0805 CHIP 1K2 5%                |
| R118  |     | 036-13100-00 | RES M/F 0805 CHIP 100E 5%                | R303  |     | 036-13100-00 | RES M/F 0805 CHIP 100E 5%               |
| R119  |     | 036-12100-00 | RES M/F 0805 CHIP 10E 5%                 | R305  |     | 036-12100-00 | RES M/F 0805 CHIP 10E 5%                |
| R138  |     | 036-16100-00 | RES M/F 0805 CHIP 100K 5%                | R306  |     | 036-14100-00 | RES M/F 0805 CHIP 1K 5%                 |
| R151  |     | 036-14330-00 | RES M/F 0805 CHIP 3K3 5%                 | R307  |     | 036-12680-00 | RES M/F 0805 CHIP 68E 5%                |
| R152  |     | 036-16390-00 | RES M/F 0805 CHIP 390K 5%                | R308  |     | 036-14100-00 | RES M/F 0805 CHIP 1K 5%                 |
| RV153 |     | 042-05470-07 | RES PRESET 47K CARBON 6MM FLAT DUAL ADJ  | R309  |     | 036-14100-00 | RES M/F 0805 CHIP 1K 5%                 |
| R155  |     | 036-16100-00 | RES M/F 0805 CHIP 100K 5%                | R310  |     | 036-12470-00 | RES M/F 0805 CHIP 47E 5%                |
| R156  |     | 036-13100-00 | RES M/F 0805 CHIP 100E 5%                | R311  |     | 036-13180-00 | RES M/F 0805 CHIP 180E 5%               |
| R157  |     | 036-15100-00 | RES M/F 0805 CHIP 10K 5%                 | R312  |     | 036-13680-00 | RES M/F 0805 CHIP 680E 5%               |
| R158  |     | 036-14100-00 | RES M/F 0805 CHIP 1K 5%                  | R313  |     | 036-14100-00 | RES M/F 0805 CHIP 1K 5%                 |
| R159  |     | 036-12470-00 | RES M/F 0805 CHIP 47E 5%                 | R314  |     | 036-12100-00 | RES M/F 0805 CHIP 10E 5%                |
| R160  |     | 036-12100-00 | RES M/F 0805 CHIP 10E 5%                 | R315  |     | 036-12120-00 | RES M/F 0805 CHIP 12E 5%                |
| R161  |     | 036-14100-00 | RES M/F 0805 CHIP 1K 5%                  | R316  |     | 036-13150-00 | RES M/F 0805 CHIP 150E 5%               |
| R194  |     | 036-10000-00 | RES M/F 0805 CHIP ZERO OHM               | R317  |     | 036-13470-00 | RES M/F 0805 CHIP 470E 5%               |
| R195  |     | 036-15680-00 | RES M/F 0805 CHIP 68K 5%                 | R318  |     | 036-13470-00 | RES M/F 0805 CHIP 470E 5%               |
| R196  |     | 036-13100-00 | RES M/F 0805 CHIP 100E 5%                | R321  |     | 036-16470-00 | RES M/F 0805 CHIP 470K 5%               |
| R197  |     | 036-13100-00 | RES M/F 0805 CHIP 100E 5%                | RV324 |     | 042-06470-06 | RES PRESET 470/500K 25% 6MM ROUND TOP A |
| R198  |     | 036-14220-00 | RES M/F 0805 CHIP 2K2 5%                 | R326  |     | 036-16220-00 | RES M/F 0805 CHIP 220K 5%               |
| R199  |     | 036-13100-00 | RES M/F 0805 CHIP 100E 5%                | R327  |     | 036-14100-00 | RES M/F 0805 CHIP 1K 5%                 |
| R200  |     | 036-14100-00 | RES M/F 0805 CHIP 1K 5%                  | R328  |     | 030-53330-20 | RES FILM AI 330E 5% 0.4W 4X1.6MM        |
| R201  |     | 036-13100-00 | RES M/F 0805 CHIP 100E 5%                | R329  |     | 036-14100-00 | RES M/F 0805 CHIP 1K 5%                 |
| R203  |     | 036-12220-00 | RES M/F 0805 CHIP 22E 5%                 | R330  |     | 036-16220-00 | RES M/F 0805 CHIP 220K 5%               |
| R209  |     | 036-14220-00 | RES M/F 0805 CHIP 2K2 5%                 | R332  |     | 036-13100-00 | RES M/F 0805 CHIP 100E 5%               |
| R212  |     | 036-13680-00 | RES M/F 0805 CHIP 680E 5%                | R333  |     | 036-14220-00 | RES M/F 0805 CHIP 2K2 5%                |
| R213  |     | 036-14120-00 | RES M/F 0805 CHIP 1K2 5%                 | R336  |     | 030-53100-20 | RES FILM AI 100E 5% 0.4W 4X1.6MM        |
| R214  |     | 036-13680-00 | RES M/F 0805 CHIP 680E 5%                | R337  |     | 036-10000-00 | RES M/F 0805 CHIP ZERO OHM              |
| R217  |     | 036-12470-00 | RES M/F 0805 CHIP 47E 5%                 | R338  |     | 036-15270-00 | RES M/F 0805 CHIP 27K 5%                |
| R219  |     | 036-14100-00 | RES M/F 0805 CHIP 1K 5%                  | R339  |     | 036-15100-00 | RES M/F 0805 CHIP 10K 5%                |
| R221  |     | 036-13100-00 | RES M/F 0805 CHIP 100E 5%                | R340  |     | 036-15100-00 | RES M/F 0805 CHIP 10K 5%                |
| RV222 |     | 042-05470-07 | RES PRESET 47K CARBON 6MM FLAT DUAL ADJ  | R341  |     | 036-15470-00 | RES M/F 0805 CHIP 47K 5%                |
| R223  |     | 036-15220-00 | RES M/F 0805 CHIP 22K 5%                 | R342  |     | 036-16390-00 | RES M/F 0805 CHIP 390K 5%               |
| R224  |     | 036-15220-00 | RES M/F 0805 CHIP 22K 5%                 | R343  |     | 036-14470-00 | RES M/F 0805 CHIP 4K7 5%                |
| R225  |     | 036-15220-00 | RES M/F 0805 CHIP 22K 5%                 | R344  |     | 036-14470-00 | RES M/F 0805 CHIP 4K7 5%                |
| R226  |     | 036-15120-00 | RES M/F 0805 CHIP 12K 5%                 | R345  |     | 036-15100-00 | RES M/F 0805 CHIP 10K 5%                |
| R227  |     | 036-13470-00 | RES M/F 0805 CHIP 470E 5%                | R346  |     | 036-13680-00 | RES M/F 0805 CHIP 680E 5%               |
| R228  |     | 036-14330-00 | RES M/F 0805 CHIP 3K3 5%                 | R347  |     | 030-53100-20 | RES FILM AI 100E 5% 0.4W 4X1.6MM        |
| R229  |     | 036-12220-00 | RES M/F 0805 CHIP 22E 5%                 | R348  |     | 030-53330-20 | RES FILM AI 330E 5% 0.4W 4X1.6MM        |
| R230  |     | 036-13470-00 | RES M/F 0805 CHIP 470E 5%                | R349  |     | 036-14100-00 | RES M/F 0805 CHIP 1K 5%                 |
| R231  |     | 036-13220-00 | RES M/F 0805 CHIP 220E 5%                | R350  |     | 030-55270-20 | RES FILM AI 27K 5% 0.4W 4X1.6MM         |
| R232  |     | 036-14220-00 | RES M/F 0805 CHIP 2K2 5%                 | R351  |     | 036-12100-00 | RES M/F 0805 CHIP 10E 5%                |
| R233  |     | 036-17100-00 | RES M/F 0805 CHIP 1M 5%                  | R352  |     | 036-12100-00 | RES M/F 0805 CHIP 10E 5%                |
| R234  |     | 036-13120-00 | RES M/F 0805 CHIP 120E 5%                | R353  |     | 036-12100-00 | RES M/F 0805 CHIP 10E 5%                |
| R235  |     | 036-13330-00 | RES M/F 0805 CHIP 330E 5%                | R354  |     | 036-15470-00 | RES M/F 0805 CHIP 47K 5%                |
| R236  |     | 036-12470-00 | RES M/F 0805 CHIP 47E 5%                 | R418  |     | 036-13680-00 | RES M/F 0805 CHIP 680E 5%               |
| R237  |     | 036-13100-00 | RES M/F 0805 CHIP 100E 5%                | R420  |     | 036-15270-00 | RES M/F 0805 CHIP 27K 5%                |
| R238  |     | 036-14820-00 | RES M/F 0805 CHIP 8K2 5%                 | R421  |     | 036-15270-00 | RES M/F 0805 CHIP 27K 5%                |
| R239  |     | 036-15220-00 | RES M/F 0805 CHIP 22K 5%                 | R422  |     | 036-12220-00 | RES M/F 0805 CHIP 22E 5%                |
| R240  |     | 036-16100-00 | RES M/F 0805 CHIP 100K 5%                | R425  |     | 036-14100-00 | RES M/F 0805 CHIP 1K 5%                 |
| R241  |     | 036-14150-00 | RES M/F 0805 CHIP 1K5 5%                 | R426  |     | 036-11470-00 | RES M/F 0805 CHIP 4E7 10%               |
| R242  |     | 036-12220-00 | RES M/F 0805 CHIP 22E 5%                 | R427  |     | 036-11470-00 | RES M/F 0805 CHIP 4E7 10%               |
| R243  |     | 036-14330-00 | RES M/F 0805 CHIP 3K3 5%                 | R428  |     | 036-12220-00 | RES M/F 0805 CHIP 22E 5%                |
| R244  |     | 036-12220-00 | RES M/F 0805 CHIP 22E 5%                 | R429  |     | 036-15270-00 | RES M/F 0805 CHIP 27K 5%                |
| R245  |     | 036-12220-00 | RES M/F 0805 CHIP 22E 5%                 | R430  |     | 036-14680-00 | RES M/F 0805 CHIP 6K8 5%                |
| R247  |     | 036-12330-00 | RES M/F 0805 CHIP 33E 5%                 | R431  |     | 036-16100-00 | RES M/F 0805 CHIP 100K 5%               |
| R248  |     | 036-10000-00 | RES M/F 0805 CHIP ZERO OHM               | R432  |     | 036-12100-00 | RES M/F 0805 CHIP 10E 5%                |
| R249  |     | 036-12220-00 | RES M/F 0805 CHIP 22E 5%                 | R433  |     | 036-13100-00 | RES M/F 0805 CHIP 100E 5%               |
| R250  |     | 036-14220-00 | RES M/F 0805 CHIP 2K2 5%                 | R434  |     | 036-12470-00 | RES M/F 0805 CHIP 47E 5%                |
| R251  |     | 036-13560-00 | RES M/F 0805 CHIP 560E 5%                | R437  |     | 036-14100-00 | RES M/F 0805 CHIP 1K 5%                 |
| R252  |     | 036-14100-00 | RES M/F 0805 CHIP 1K 5%                  | R441  |     | 030-55270-20 | RES FILM AI 27K 5% 0.4W 4X1.6MM         |
| R253  |     | 036-12680-00 | RES M/F 0805 CHIP 68E 5%                 | XF101 |     | 276-00010-73 | FLTR CER DIELECTRIC 2 POLE 860MHZ       |
| R255  |     | 036-13100-00 | RES M/F 0805 CHIP 100E 5%                | XF102 |     | 276-00010-74 | FLTR CER DIELECTRIC 3 POLE 860MHZ       |
| R256  |     | 036-14180-00 | RES M/F 0805 CHIP 1K8 5%                 |       |     |              |   |
| R257  |     | 036-14120-00 | RES M/F 0805 CHIP 1K2 5%                 |       |     |              |   |
| R258  |     | 036-12100-00 | RES M/F 0805 CHIP 10E 5%                 |       |     |              |   |
| R259  |     | 036-14100-00 | RES M/F 0805 CHIP 1K 5%                  |       |     |              |   |
| R260  |     | 036-14150-00 | RES M/F 0805 CHIP 1K5 5%                 |       |     |              |   |
| R261  |     | 036-12330-00 | RES M/F 0805 CHIP 33E 5%                 |       |     |              |   |
| R262  |     | 036-12100-00 | RES M/F 0805 CHIP 10E 5%                 |       |     |              |   |
| R263  |     | 036-16180-00 | RES M/F 0805 CHIP 180K 5%                |       |     |              |   |
| R266  |     | 036-14330-00 | RES M/F 0805 CHIP 3K3 5%                 |       |     |              |   |

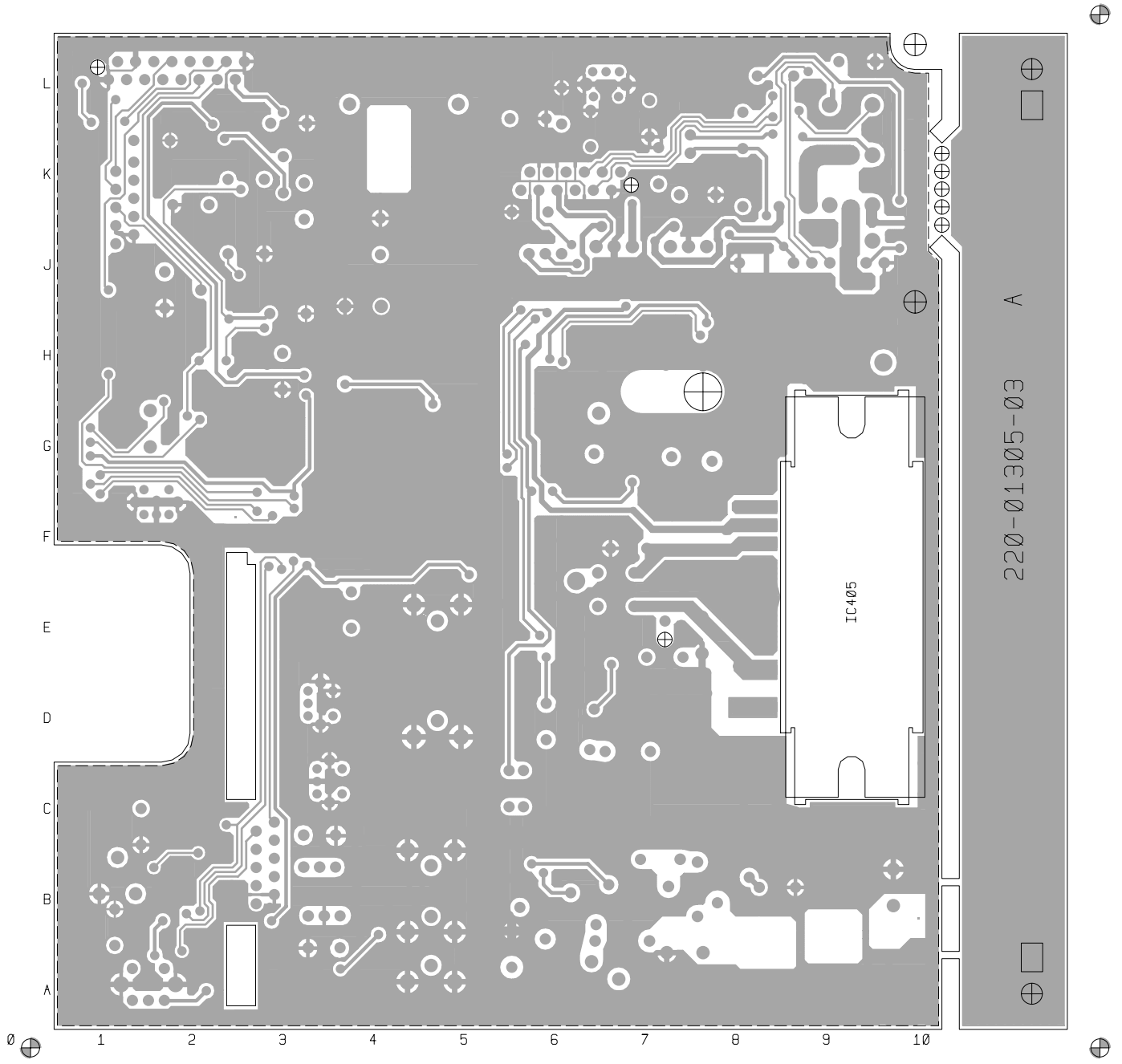
## T2000-800 Mechanical & Miscellaneous Parts

| IPN          | Description  | IPN | Description |
|--------------|--|-----|-------------|
| 065-00010-11 | BEAD FERRITE 4S3 3*1*4MM RED<br>L1, L325, L326                             |     |             |
| 201-00050-02 | CABLE AUTO RED 7/0.32MM PVC  |     |             |
| 205-00010-12 | CABLE FLAT RBBN 16 CORE 16/7/0.1 GREY                                      |     |             |
| 220-01305-03 | PCB T2000 800MHZ RF BOARD  |     |             |
| 240-00020-51 | PLUG 12 WAY 2*6 FLAT CABLE TERMN   |     |             |
| 240-00020-54 | PLUG 16 WAY 2X8 FLAT CABLE TERMN MICROMATCH                                |     |             |
| 240-02100-11 | SKT COAX BNC 3.5MM PNL NO EARTH TAG  |     |             |
| 302-05223-00 | BRKT T2000-80 PCB RETAINER   |     |             |
| 303-23135-01 | COVER BTTM A1M2505 T2000 PNTD CMLPT  |     |             |
| 303-50077-00 | CLIP A3M2525 T2000 AUDIO IC AND REG  |     |             |
| 308-13114-00 | CHASSIS COMPLETE T2000 800MHZ  |     |             |
| 316-85094-00 | PLATE A4M2160 BNC MTG UK 5X5 SERIES  |     |             |
| 319-01164-01 | SHIELD A1M2507 DIE CAST T2000 MICROP                                       |     |             |
| 319-01167-00 | SHIELD RX A3M2594 T2000  |     |             |
| 349-00010-59 | (L) SCREW 6-32 * 3/8 STEEL PAN PHILLIPS TAPTITE ZP                         |     |             |
| 349-00020-30 | SCREW TAPTITE M3X6MM PAN POZI BZ   |     |             |
| 349-00020-31 | SCREW TAPTITE M3X10MM PAN POZI BZ  |     |             |
| 349-00020-32 | SCREW TAPTITE M3X8MM PAN POZI BZ<br>Q306 =2 BNC PLATE =2 PCB TO CHASSIS =3 |     |             |
| 349-00020-34 | SCREW M3*12 PAN POZI TAPTITE BZ  |     |             |
| 349-00020-48 | SCREW M4X25MM PAN POZI TAPTITE II BRIGHT ZINC                              |     |             |
| 349-00020-49 | SCREW TAPTITE M4X35MM PAN POZI BZ<br>TOP COVER                             |     |             |
| 360-01053-01 | PLUG A3M2563 PLASTIC D-RANGE BLANKING                                      |     |             |
| 362-00010-08 | GASKET SIL INSULATING TO-5 TO-39<br>FIT UNDER TRIM CAP CV212               |     |             |
| 362-01027-01 | GASKET A4M2564 RUBBER SEAL T2000 MAIN CONN                                 |     |             |
| 362-01028-00 | GASKET A4M2652 130X3MM CONDUCT STRIPS T2000                                |     |             |
| 362-01058-00 | GASKET TO-126 11.1X7.9 D2.4 SIL INSULATION                                 |     |             |

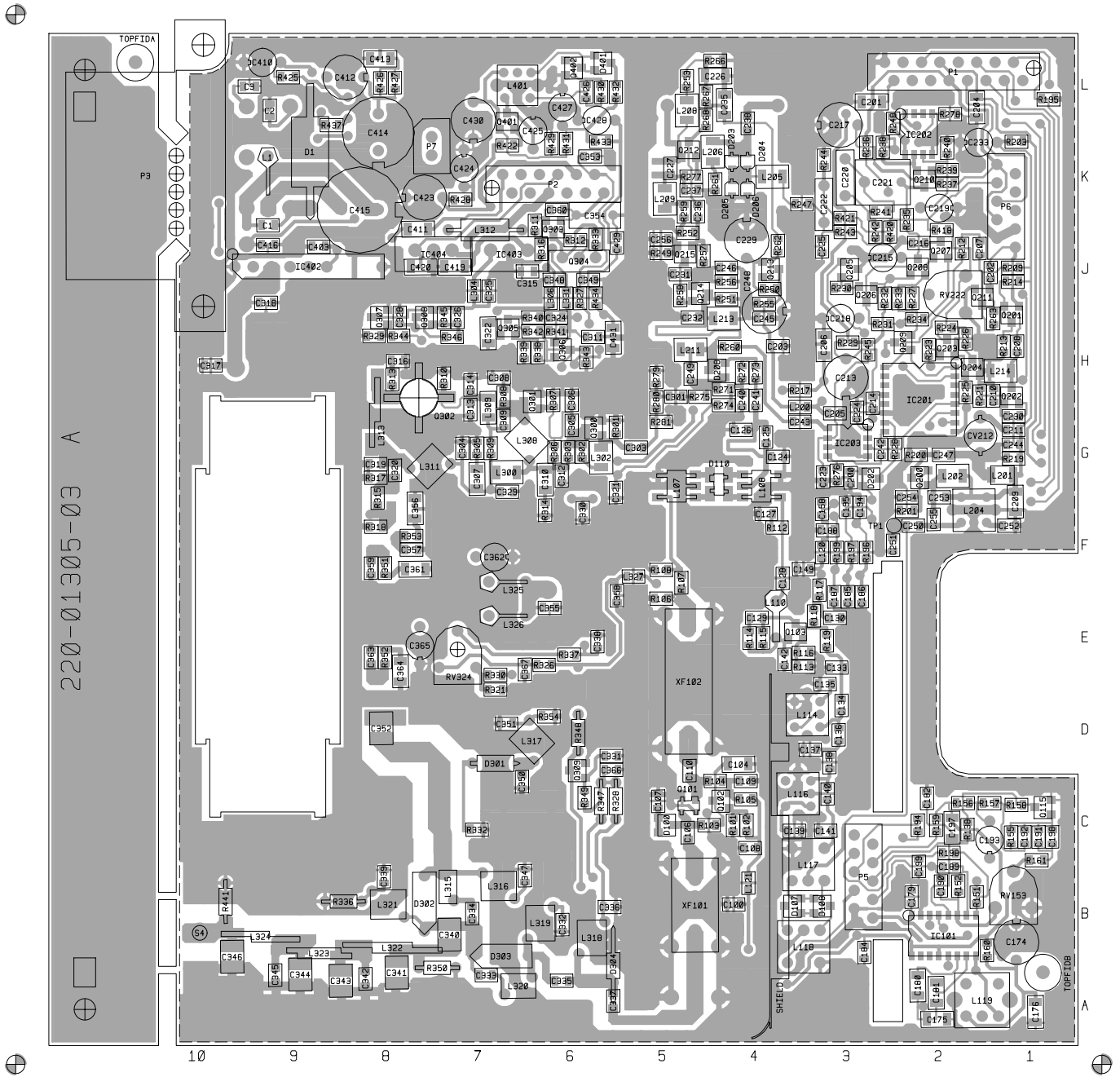
## T2000-800 Grid Reference Index (IPN 220-01305-03)

| Device | PCB   | Circuit | Device | PCB   | Circuit | Device | PCB   | Circuit | Device  | PCB   | Circuit |
|--------|-------|---------|--------|-------|---------|--------|-------|---------|---------|-------|---------|
| C1     | 1:J9  | 1-V9    | C222   | 1:J3  | 1-H3    | C345   | 1:A9  | 1-V0    | IC402   | 1:J9  | 1-S8    |
| C2     | 1:L9  | 1-U8    | C223   | 1:G3  | 1-E3    | C346   | 1:A10 | 1-W0    | IC403   | 1:J7  | 1-K9    |
| C3     | 1:L10 | 1-V8    | C224   | 1:G3  | 1-E2    | C347   | 1:B7  | 1-S1    | IC404   | 1:J8  | 1-K8    |
| C100   | 1:B4  | 1-S4    | C225   | 1:J3  | 1-A0    | C348   | 1:J6  | 1-U2    | IC405   | 2:C9  | 1-P0    |
| C104   | 1:D4  | 1-Q3    | C226   | 1:L4  | 1-C1    | C349   | 1:J6  | 1-V2    |         |       |         |
| C106   | 1:C5  | 1-R3    | C227   | 1:K5  | 1-C0    | C350   | 1:C7  | 1-S0    | L1      | 1:K9  | 1-U9    |
| C107   | 1:C5  | 1-R2    | C229   | 1:J4  | 1-D1    | C351   | 1:D7  | 1-R1    | L107    | 1:G5  | 1-L3    |
| C108   | 1:C4  | 1-S4    | C230   | 1:G1  | 1-E7    | C352   | 1:D8  | 1-R0    | L108    | 1:G4  | 1-J3    |
| C109   | 1:C4  | 1-P4    | C231   | 1:J5  | 1-E0    | C353   | 1:K6  | 1-V2    | L110    | 1:E4  | 1-M5    |
| C110   | 1:C5  | 1-P3    | C232   | 1:H5  | 1-F1    | C354   | 1:K6  | 1-U2    | L114    | 1:D3  | 1-P5    |
| C124   | 1:G4  | 1-I2    | C233   | 1:K2  | 1-D8    | C355   | 1:E6  | 1-P2    | L116    | 1:C4  | 1-Q5    |
| C125   | 1:G4  | 1-I2    | C235   | 1:L4  | 1-C1    | C356   | 1:F8  | 1-P1    | L117    | 1:B3  | 1-R6    |
| C126   | 1:G4  | 1-H2    | C236   | 1:K5  | 1-D0    | C357   | 1:F8  | 1-P1    | L118    | 1:B3  | 1-T5    |
| C127   | 1:F4  | 1-L5    | C237   | 1:K5  | 1-C0    | C358   | 1:E6  | 1-V1    | L119    | 1:A2  | 1-K8    |
| C128   | 1:F4  | 1-L5    | C238   | 1:L4  | 1-B0    | C359   | 1:F8  | 1-P1    | L120    | 1:F3  | 1-L4    |
| C129   | 1:E4  | 1-M5    | C240   | 1:H4  | 1-H2    | C360   | 1:K6  | 1-N1    | L121    | 1:B4  | 1-S4    |
| C130   | 1:E3  | 1-M5    | C241   | 1:H4  | 1-H3    | C361   | 1:F8  | 1-P1    | L200    | 1:G4  | 1-C2    |
| C133   | 1:E3  | 1-O5    | C242   | 1:G3  | 1-B3    | C362   | 1:F7  | 1-P1    | L201    | 1:G1  | 1-D7    |
| C134   | 1:D3  | 1-O6    | C243   | 1:G4  | 1-E3    | C363   | 1:E8  | 1-Q1    | L202    | 1:G2  | 1-F7    |
| C135   | 1:D3  | 1-P5    | C244   | 1:G1  | 1-F7    | C364   | 1:E8  | 1-Q1    | L204    | 1:F2  | 1-G7    |
| C136   | 1:D3  | 1-P6    | C245   | 1:H4  | 1-E2    | C365   | 1:E8  | 1-R1    | L205    | 1:K4  | 1-A0    |
| C137   | 1:D3  | 1-P5    | C246   | 1:J4  | 1-E1    | C366   | 1:D6  | 1-V1    | L206    | 1:K4  | 1-B0    |
| C138   | 1:D3  | 1-P6    | C247   | 1:G2  | 1-F7    | C367   | 1:E7  | 1-S1    | L207    |       | 1-C0    |
| C139   | 1:C4  | 1-Q5    | C248   | 1:H4  | 1-E2    | C403   | 1:J9  | 1-S7    | L208    | 1:L5  | 1-C0    |
| C140   | 1:C3  | 1-Q6    | C249   | 1:H5  | 1-G0    | C410   | 1:L9  | 1-S9    | L209    | 1:K5  | 1-D0    |
| C141   | 1:C3  | 1-Q5    | C250   | 1:F2  | 1-H7    | C411   | 1:J8  | 1-T7    | L211    | 1:H5  | 1-G1    |
| C142   | 1:E4  | 1-M5    | C251   | 1:F3  | 1-H7    | C412   | 1:L8  | 1-T9    | L213    | 1:H4  | 1-F1    |
| C149   | 1:F3  | 1-M4    | C252   | 1:F1  | 1-G7    | C413   | 1:L8  | 1-T8    | L214    | 1:H1  | 1-D7    |
| C158   | 1:F3  | 1-L4    | C253   | 1:F2  | 1-G7    | C414   | 1:K8  | 1-U9    | L300    | 1:G7  | 1-L1    |
| C174   | 1:B1  | 1-J8    | C254   | 1:F2  | 1-G7    | C415   | 1:K8  | 1-U9    | L302    | 1:G6  | 1-I0    |
| C175   | 1:A2  | 1-K8    | C255   | 1:F2  | 1-G7    | C416   | 1:J9  | 1-U8    | L304    | 1:J7  | 1-L2    |
| C176   | 1:A1  | 1-K8    | C256   | 1:J5  | 1-F0    | C419   | 1:J7  | 1-J8    | L306    | 1:J6  | 1-O1    |
| C179   | 1:B2  |         | C301   | 1:H5  | 1-H0    | C420   | 1:J8  | 1-K8    | L308    | 1:G7  | 1-K0    |
| C180   | 1:A2  | 1-L8    | C303   | 1:G5  | 1-I0    | C423   | 1:K8  | 1-K9    | L309    | 1:G7  | 1-L0    |
| C181   | 1:A2  | 1-L7    | C304   | 1:G7  | 1-M1    | C424   | 1:K7  | 1-L9    | L311    | 1:G8  | 1-N0    |
| C182   | 1:C2  | 1-N6    | C305   | 1:G6  | 1-J0    | C425   | 1:K6  | 1-N8    | L312    | 1:J7  | 1-O2    |
| C184   | 1:B3  | 1-M8    | C306   | 1:H6  | 1-J0    | C426   | 1:L6  | 1-O9    | L313    | 1:G8  | 1-N0    |
| C185   | 1:E3  | 1-I6    | C307   | 1:G7  | 1-M1    | C427   | 1:L6  | 1-P8    | L315    | 1:B7  | 1-T0    |
| C186   | 1:E3  | 1-J7    | C308   | 1:H7  | 1-L0    | C428   | 1:L6  | 1-Q8    | L316    | 1:B7  | 1-T1    |
| C187   | 1:E3  | 1-N8    | C309   | 1:G7  | 1-L0    | C429   | 1:J6  | 1-P8    | L317    | 1:D6  | 1-R1    |
| C188   | 1:F3  | 1-A6    | C310   | 1:G6  | 1-J1    | C430   | 1:L7  | 1-M9    | L318    | 1:B6  | 1-U1    |
| C189   | 1:B2  | 1-K6    | C311   | 1:H6  | 1-T2    | C431   | 1:H6  | 1-R8    | L319    | 1:B6  | 1-U1    |
| C190   | 1:B2  | 1-K7    | C312   | 1:G6  | 1-I1    |        |       |         | L320    | 1:A7  | 1-U1    |
| C191   | 1:C1  | 1-M6    | C313   | 1:G7  | 1-L0    | D1     | 1:K9  | 1-V9    | L321    | 1:B8  | 1-T0    |
| C192   | 1:C1  | 1-M7    | C314   | 1:H7  | 1-M0    | D100   | 1:C5  | 1-Q3    | L322    | 1:B8  | 1-U0    |
| C193   | 1:C1  | 1-N7    | C315   | 1:J6  | 1-O1    |        |       | 1-R3    | L323    | 1:B9  | 1-V0    |
| C194   | 1:F3  | 1-A7    | C316   | 1:H8  | 1-N0    | D107   | 1:B4  | 1-S6    | L324    | 1:B10 | 1-V0    |
| C195   | 1:F3  | 1-A8    | C317   | 1:H10 | 1-R2    |        |       | 1-S5    | L325    | 1:F7  | 1-Q2    |
| C197   | 1:C2  | 1-O7    | C318   | 1:J9  | 1-Q2    | D108   | 1:B3  | 1-S5    | L326    | 1:E7  | 1-Q2    |
| C198   | 1:C1  | 1-M6    | C319   | 1:G8  | 1-N0    |        |       | 1-S5    | L327    | 1:F5  | 1-U2    |
| C199   | 1:B2  | 1-M7    | C320   | 1:G8  | 1-O0    | D110   | 1:G4  | 1-K3    | L331    | 1:J6  | 1-U2    |
| C200   | 1:G3  | 1-B5    | C321   | 1:G6  | 1-J2    | D202   | 1:G3  | 1-C5    | L401    | 1:L7  | 1-N9    |
| C201   | 1:L3  | 1-B4    | C322   | 1:H7  | 1-I1    | D203   | 1:K4  | 1-A0    |         |       |         |
| C202   | 1:J1  | 1-B7    | C324   | 1:H6  | 1-K2    | D204   | 1:K4  | 1-B0    | NOT-STD |       | 1-O0    |
| C203   | 1:H4  | 1-C2    | C325   | 1:J7  | 1-L2    | D205   | 1:K4  | 1-A0    |         |       |         |
| C204   | 1:L2  | 1-A5    | C326   | 1:H7  | 1-L2    | D206   | 1:K4  | 1-B0    | P1      | 1:L1  | 1-A4    |
| C205   | 1:G3  | 1-C2    | C328   | 1:H8  | 1-M2    | D208   | 1:H4  | 1-G2    |         |       | 1-A5    |
| C206   | 1:H3  |         | C329   | 1:G7  | 1-M1    |        |       | 1-G0    |         |       | 1-A5    |
| C207   | 1:J2  | 1-B7    | C330   | 1:F6  | 1-S2    | D301   | 1:D7  | 1-R0    |         |       | 1-A5    |
| C208   | 1:H1  | 1-D7    | C331   | 1:D6  | 1-V1    | D302   | 1:B8  | 1-T0    |         |       | 1-A6    |
| C209   | 1:F1  | 1-G8    | C332   | 1:B6  | 1-V1    | D303   | 1:A6  | 1-T0    |         |       | 1-A5    |
| C210   | 1:H1  | 1-E7    | C333   | 1:A7  | 1-U0    | D304   | 1:B6  | 1-T1    |         |       | 1-A4    |
| C211   | 1:G1  | 1-E8    | C334   | 1:B7  | 1-T0    | D401   | 1:L6  | 1-P9    |         |       | 1-A6    |
| CV212  | 1:G2  | 1-E7    | C335   | 1:A6  | 1-T1    |        |       | 1-P9    |         |       | 1-A4    |
| C213   | 1:H3  | 1-D4    | C336   | 1:B6  | 1-U1    |        |       |         |         |       | 1-A6    |
| C214   | 1:G3  | 1-C4    | C337   | 1:A6  | 1-T2    | IC101  | 1:B2  | 1-K6    |         |       | 1-A4    |
| C215   | 1:J3  | 1-E4    | C338   | 1:E6  | 1-S2    |        |       | 1-L7    |         |       | 1-A7    |
| C216   | 1:J2  | 1-E5    | C339   | 1:B8  | 1-T0    |        |       | 1-O7    |         |       | 1-A5    |
| C217   | 1:L3  | 1-F4    | C340   | 1:B7  | 1-T0    | IC201  | 1:H2  | 1-B4    |         |       | 1-A6    |
| C218   | 1:H3  | 1-F5    | C341   | 1:A8  | 1-U0    | IC202  | 1:K2  |         |         |       | 1-A5    |
| C219   | 1:K2  | 1-G4    | C342   | 1:A8  | 1-U0    |        |       | 1-G4    |         |       | 1-A6    |
| C220   | 1:K3  | 1-G5    | C343   | 1:A9  | 1-V0    |        |       | 1-I4    | P2      | 1:K7  | 1-W3    |
| C221   | 1:K2  | 1-G5    | C344   | 1:A9  | 1-V0    | IC203  | 1:G3  | 1-E2    |         |       | 1-W3    |

| Device | PCB   | Circuit | Device | PCB  | Circuit | Device | PCB  | Circuit | Device | PCB   | Circuit |
|--------|-------|---------|--------|------|---------|--------|------|---------|--------|-------|---------|
|        |       | 1-W3    | R104   | 1:C4 | 1-P3    | R260   | 1:H4 | 1-F2    | R434   | 1:J6  | 1-Q9    |
|        |       | 1-W3    | R105   | 1:C4 | 1-Q4    | R261   | 1:K4 | 1-B0    | R437   | 1:L9  | 1-V6    |
|        |       | 1-W2    | R106   | 1:E5 | 1-N3    | R262   | 1:J4 | 1-D1    | R441   | 1:B10 | 1-W0    |
|        |       | 1-W2    | R107   | 1:F5 | 1-N3    | R263   | 1:H1 | 1-C7    |        |       |         |
|        |       | 1-W4    | R108   | 1:F5 | 1-M3    | R266   | 1:L4 | 1-C1    | SHIELD | 1:D4  |         |
|        |       | 1-W4    | R112   | 1:F4 | 1-L5    | R267   | 1:L5 | 1-C1    | S4     | 1:B10 | 1-W0    |
|        |       | 1-W4    | R113   | 1:E3 | 1-N5    | R268   | 1:L5 | 1-D1    |        |       |         |
|        |       | 1-W3    | R114   | 1:E4 | 1-M5    | R271   | 1:H4 | 1-G1    | TP1    | 1:F3  | 1-I7    |
|        |       | 1-W2    | R115   | 1:E4 | 1-N5    | R272   | 1:H4 | 1-G2    |        |       |         |
|        |       | 1-W2    | R116   | 1:E3 | 1-N5    | R273   | 1:H4 | 1-H3    | XF101  | 1:B5  | 1-S3    |
| P3     | 1:L10 | 1-V9    | R117   | 1:E3 | 1-M6    | R274   | 1:G4 | 1-I2    | XF102  | 1:D5  | 1-O3    |
|        |       | 1-V8    | R118   | 1:E3 | 1-M6    | R275   | 1:H5 | 1-G0    |        |       |         |
|        |       | 1-V9    | R119   | 1:E3 | 1-O6    | R276   | 1:G3 | 1-B2    |        |       |         |
|        |       | 1-V9    | R138   | 1:C2 | 1-N6    | R277   | 1:K5 | 1-D0    |        |       |         |
|        |       | 1-V8    | R151   | 1:B2 | 1-K7    | R278   | 1:L2 | 1-I5    |        |       |         |
|        |       | 1-V8    | R152   | 1:B2 | 1-K6    | R279   | 1:H5 | 1-H0    |        |       |         |
|        |       | 1-V9    | RV153  | 1:B1 | 1-L6    | R280   | 1:G5 | 1-H0    |        |       |         |
| P5     | 1:B3  | 1-P8    | R155   | 1:C1 | 1-N7    | R281   | 1:G5 | 1-I0    |        |       |         |
|        |       | 1-P8    | R156   | 1:C2 | 1-N8    | R301   | 1:G6 | 1-I0    |        |       |         |
|        |       | 1-P6    | R157   | 1:C1 | 1-N7    | R302   | 1:G6 | 1-I0    |        |       |         |
|        |       | 1-P7    | R158   | 1:C1 | 1-N7    | R303   | 1:G6 | 1-J1    |        |       |         |
|        |       | 1-P6    | R159   | 1:C2 | 1-P8    | R305   | 1:G7 | 1-M0    |        |       |         |
|        |       | 1-S6    | R160   | 1:B2 | 1-L8    | R306   | 1:G6 | 1-K0    |        |       |         |
|        |       | 1-S7    | R161   | 1:C1 | 1-M6    | R307   | 1:H6 | 1-K0    |        |       |         |
|        |       | 1-P7    | R194   | 1:C2 | 1-O6    | R308   | 1:H7 | 1-L0    |        |       |         |
|        |       | 1-P7    | R195   | 1:L1 | 1-A7    | R309   | 1:G7 | 1-L0    |        |       |         |
|        |       | 1-P7    | R196   | 1:F3 | 1-J7    | R310   | 1:H7 | 1-M0    |        |       |         |
| P6     | 1:J1  | 1-H9    | R197   | 1:F3 | 1-I7    | R311   | 1:J6 | 1-N1    |        |       |         |
|        |       | 1-H9    | R198   | 1:C2 | 1-M7    | R312   | 1:J6 | 1-O1    |        |       |         |
|        |       | 1-C9    | R199   | 1:F3 | 1-J9    | R313   | 1:H8 | 1-N0    |        |       |         |
|        |       | 1-C8    | R200   | 1:G2 | 1-F7    | R314   | 1:F6 | 1-J0    |        |       |         |
|        |       | 1-H8    | R201   | 1:F2 | 1-F7    | R315   | 1:F8 | 1-O0    |        |       |         |
|        |       | 1-C9    | R203   | 1:K1 | 1-H8    | R316   | 1:J6 | 1-N1    |        |       |         |
|        |       | 1-C9    | R209   | 1:J1 | 1-C7    | R317   | 1:G8 | 1-O0    |        |       |         |
|        |       | 1-H8    | R212   | 1:J2 | 1-B6    | R318   | 1:F8 | 1-P0    |        |       |         |
|        |       | 1-C8    | R213   | 1:H1 | 1-B6    | R321   | 1:D7 | 1-S1    |        |       |         |
|        |       | 1-H8    | R214   | 1:J1 | 1-B7    | RV324  | 1:E7 | 1-S2    |        |       |         |
| P7     | 1:K8  | 1-V7    | R217   | 1:H4 |         | R326   | 1:E6 | 1-T2    |        |       |         |
|        |       | 1-V7    | R219   | 1:G1 | 1-E7    | R327   | 1:J6 | 1-T2    |        |       |         |
|        |       |         | R221   | 1:H2 | 1-D7    | R328   | 1:C6 | 1-V1    |        |       |         |
| Q101   | 1:C5  | 1-P3    | RV222  | 1:J2 | 1-C6    | R329   | 1:H8 | 1-L1    |        |       |         |
| Q102   | 1:C4  | 1-Q4    | R223   | 1:H2 | 1-B5    | R330   | 1:E7 | 1-R1    |        |       |         |
| Q103   | 1:E4  | 1-N5    | R224   | 1:H2 | 1-C6    | R332   | 1:C7 | 1-S0    |        |       |         |
| Q115   | 1:C1  | 1-N6    | R225   | 1:H2 | 1-B5    | R333   | 1:J6 | 1-O2    |        |       |         |
| Q200   | 1:G2  | 1-F7    | R226   | 1:H2 | 1-C5    | R336   | 1:B8 | 1-T0    |        |       |         |
| Q201   | 1:H1  | 1-B7    | R227   | 1:J2 | 1-E4    | R337   | 1:E6 | 1-S2    |        |       |         |
| Q202   | 1:H1  | 1-D7    | R228   | 1:G3 | 1-C5    | R338   | 1:H6 | 1-J2    |        |       |         |
| Q203   | 1:H2  | 1-C5    | R229   | 1:H3 | 1-D4    | R339   | 1:H7 | 1-J1    |        |       |         |
| Q204   | 1:H2  | 1-C5    | R230   | 1:J3 | 1-D4    | R340   | 1:H6 | 1-J2    |        |       |         |
| Q205   | 1:J3  | 1-D4    | R231   | 1:H3 | 1-D5    | R341   | 1:H6 | 1-J2    |        |       |         |
| Q206   | 1:J3  | 1-D5    | R232   | 1:J3 | 1-D5    | R342   | 1:H6 | 1-I2    |        |       |         |
| Q207   | 1:J2  | 1-E5    | R233   | 1:J2 | 1-E4    | R343   | 1:H6 | 1-K1    |        |       |         |
| Q208   | 1:J2  | 1-E5    | R234   | 1:H2 | 1-E5    | R344   | 1:H8 | 1-L1    |        |       |         |
| Q209   | 1:H2  | 1-E4    | R235   | 1:J2 | 1-F5    | R345   | 1:H7 | 1-L2    |        |       |         |
| Q210   | 1:K2  | 1-F4    | R236   | 1:K3 | 1-F5    | R346   | 1:H7 | 1-M1    |        |       |         |
| Q211   | 1:J2  | 1-C7    | R237   | 1:K2 | 1-F5    | R347   | 1:C6 | 1-T1    |        |       |         |
| Q212   | 1:K5  | 1-D0    | R238   | 1:K3 | 1-F4    | R348   | 1:D6 | 1-U1    |        |       |         |
| Q213   | 1:J4  | 1-D1    | R239   | 1:K2 | 1-F4    | R349   | 1:C6 | 1-V1    |        |       |         |
| Q214   | 1:J5  | 1-F1    | R240   | 1:K2 | 1-G4    | R350   | 1:A8 | 1-T0    |        |       |         |
| Q215   | 1:J5  | 1-F0    | R241   | 1:K3 | 1-G5    | R351   | 1:F8 | 1-P1    |        |       |         |
| Q300   | 1:G6  | 1-J0    | R242   | 1:J3 | 1-H4    | R352   | 1:E8 | 1-Q1    |        |       |         |
| Q301   | 1:H6  | 1-K0    | R243   | 1:J3 | 1-H3    | R353   | 1:F8 | 1-P1    |        |       |         |
| Q302   | 1:H8  | 1-N0    | R244   | 1:K3 | 1-I3    | R354   | 1:D6 | 1-R1    |        |       |         |
| Q303   | 1:J6  | 1-N1    | R245   | 1:H3 | 1-D3    | R418   | 1:J2 | 1-G6    |        |       |         |
| Q304   | 1:J6  | 1-O1    | R247   | 1:K4 | 1-A0    | R420   | 1:J3 | 1-H4    |        |       |         |
| Q305   | 1:H7  | 1-J1    | R248   | 1:L3 | 1-H5    | R421   | 1:J3 | 1-I3    |        |       |         |
| Q306   | 1:H6  | 1-K2    | R249   | 1:J5 | 1-F0    | R422   | 1:K7 | 1-L9    |        |       |         |
| Q307   | 1:H8  | 1-M1    | R250   | 1:J4 | 1-D2    | R425   | 1:L9 | 1-R9    |        |       |         |
| Q308   | 1:H8  | 1-M2    | R251   | 1:J4 | 1-E1    | R426   | 1:L8 | 1-T8    |        |       |         |
| Q309   | 1:C6  | 1-V1    | R252   | 1:J5 | 1-D0    | R427   | 1:L8 | 1-T8    |        |       |         |
| Q401   | 1:L7  | 1-N9    | R253   | 1:L5 | 1-C1    | R428   | 1:K7 | 1-L9    |        |       |         |
| Q402   | 1:L6  | 1-O9    | R255   | 1:J4 | 1-E2    | R429   | 1:K6 | 1-M8    |        |       |         |
|        |       |         | R256   | 1:J4 | 1-E1    | R430   | 1:L6 | 1-O9    |        |       |         |
| R101   | 1:C4  | 1-R3    | R257   | 1:J5 | 1-E0    | R431   | 1:K6 | 1-O8    |        |       |         |
| R102   | 1:C4  | 1-R4    | R258   | 1:J5 | 1-F0    | R432   | 1:L6 | 1-P9    |        |       |         |
| R103   | 1:C5  | 1-Q3    | R259   | 1:K5 | 1-D0    | R433   | 1:K6 | 1-P9    |        |       |         |

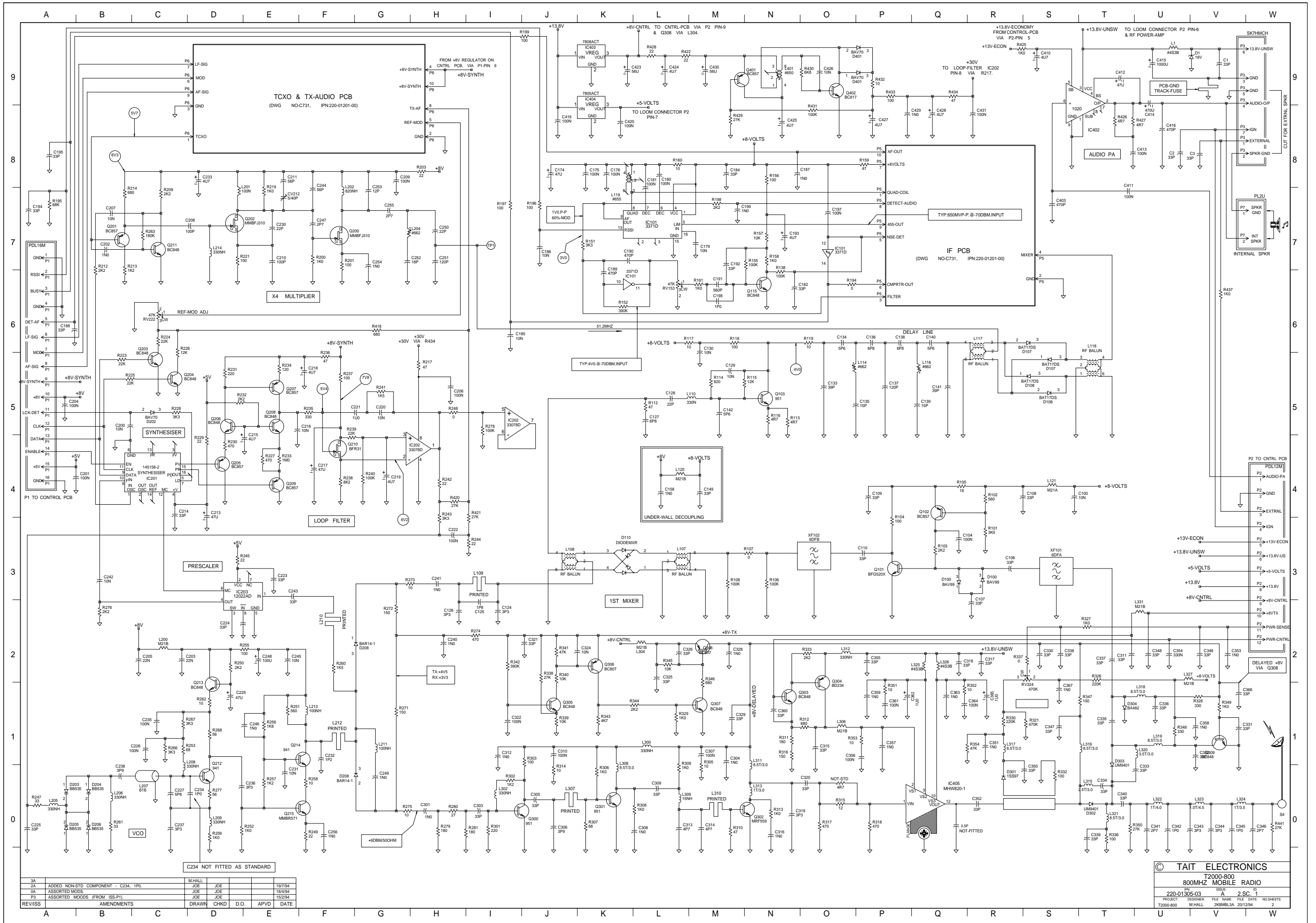


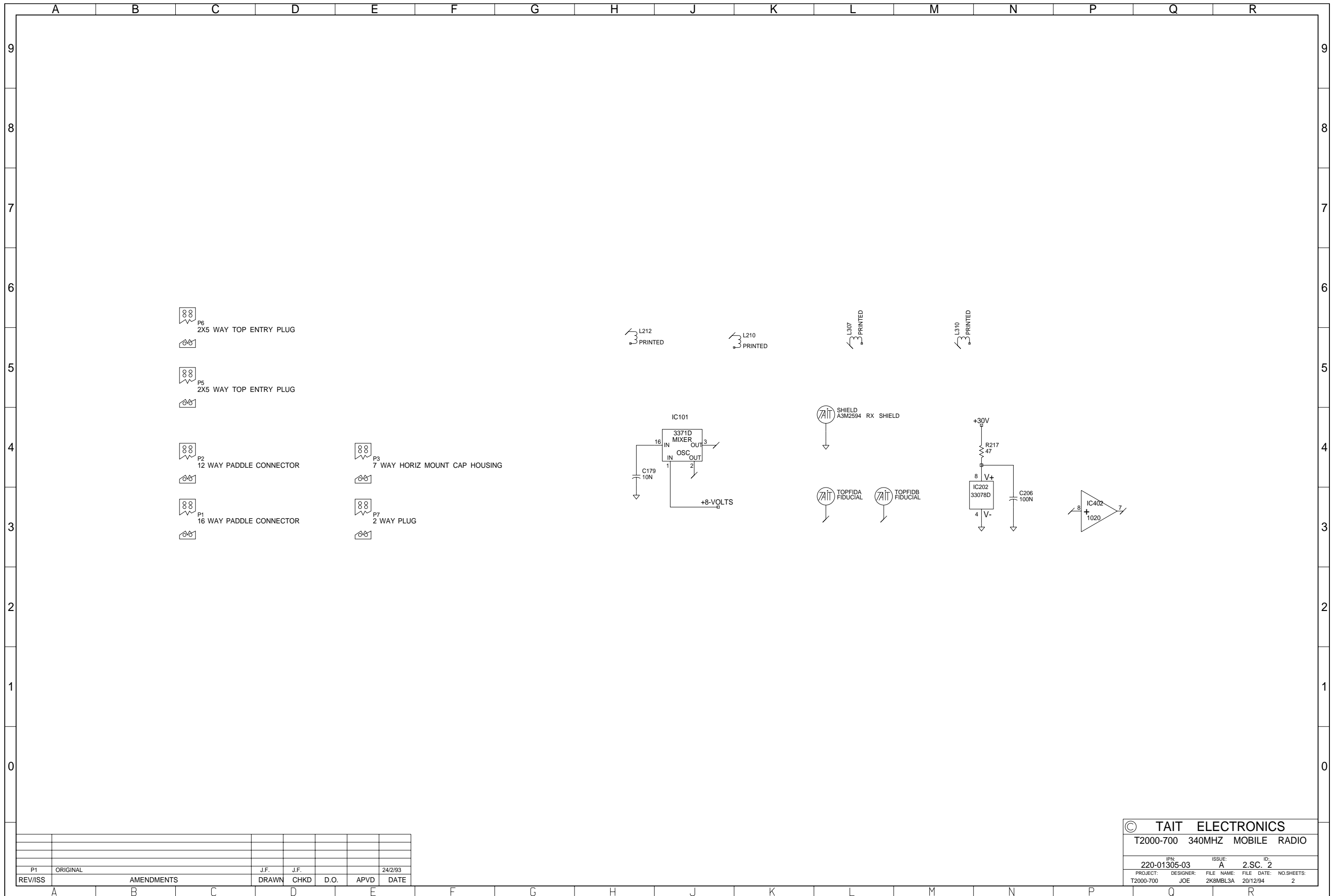
**T2000-800 RF PCB (IPN 220-01305-03) - Bottom Side**



T2000-800 RF PCB (IPN 220-01305-03) - Top Side







| REV/ISS | ORIGINAL | AMENDMENTS | J.F. | J.F. | D.O. | APVD | DATE    |
|---------|----------|------------|------|------|------|------|---------|
| P1      | ORIGINAL |            | J.F. | J.F. |      |      | 24/2/93 |

|                               |           |            |            |
|-------------------------------|-----------|------------|------------|
| © TAIT ELECTRONICS            |           |            |            |
| T2000-700 340MHZ MOBILE RADIO |           |            |            |
| IPN:                          | ISSUE:    | ID:        |            |
| 220-01305-03                  | A         | 2.SC. 2    |            |
| PROJECT:                      | DESIGNER: | FILE NAME: | FILE DATE: |
| T2000-700                     | JOE       | 2K8MBL3A   | 20/12/94   |
|                               |           | NO SHEETS: | 2          |